



β-Tubulin Monoclonal Antibody(5G3)

Catalog No	YP-Ab-02968
Isotype	IgG
Reactivity	Human;Rat;Mouse;Mk;Dg;Ch;Hamster;Rabbit;sheep;Insect;Yeast;Fish;Bovine;Rice
Applications	WB;IF;IHC
Gene Name	TUBB3
Protein Name	Tubulin beta-3 chain
Immunogen	Synthetic Peptide of β-Tubulin
Specificity	The antibody detects endogenous β-tubulin protein.
Formulation	PBS, pH 7.4, containing 0.5%BSA, 0.02% sodium azide as Preservative and 50% Glycerol.
Source	Monoclonal, Mouse
Purification	The antibody was affinity-purified from mouse ascites by affinity-chromatography using specific immunogen.
Dilution	WB: 1:5000 IHC: 1:200 IF 1:200
Concentration	1 mg/ml
Purity	≥90%
Storage Stability	-20°C/1 year
Synonyms	TUBB3; TUBB4; Tubulin beta-3 chain; Tubulin beta-4 chain; Tubulin beta-III
Observed Band	55kD
Cell Pathway	Cytoplasm, cytoskeleton . Cell projection, growth cone . Cell projection, lamellipodium . Cell projection, filopodium .
Tissue Specificity	Expression is primarily restricted to central and peripheral nervous system. Greatly increased expression in most cancerous tissues.
Function	domain:The highly acidic C-terminal region may bind cations such as calcium.,function:Receptor for MSH (alpha, beta and gamma) and ACTH. The activity of this receptor is mediated by G proteins which activate adenylate cyclase.,function:Tubulin is the major constituent of microtubules. It binds two moles of GTP, one at an exchangeable site on the beta chain and one at a non-exchangeable site on the alpha-chain.,polymorphism:Genetic variations in MC1R are associated with variation in skin/hair/eye pigmentation type 2 (SHEP2) [MIM:266300]. Hair, eye and skin pigmentation are among the most visible examples of human phenotypic variation, with a broad normal range that is subject to substantial geographic stratification. In the case of skin, individuals tend to have lighter pigmentation with increasing distance from the equator. By contrast, the majority of variation in human eye and hair col
Background	tubulin beta 3 class III(TUBB3) Homo sapiens This gene encodes a class III member of the beta tubulin protein family. Beta tubulins are one of two core



protein families (alpha and beta tubulins) that heterodimerize and assemble to form microtubules. This protein is primarily expressed in neurons and may be involved in neurogenesis and axon guidance and maintenance. Mutations in this gene are the cause of congenital fibrosis of the extraocular muscles type 3. Alternate splicing results in multiple transcript variants. A pseudogene of this gene is found on chromosome 6. [provided by RefSeq, Oct 2010],

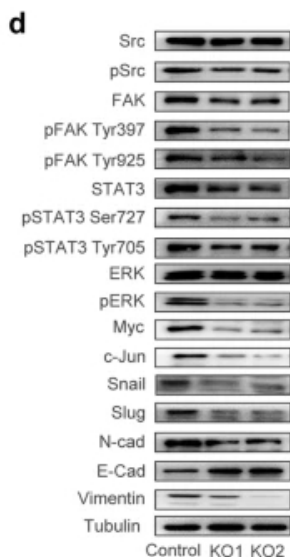
matters needing attention

Avoid repeated freezing and thawing!

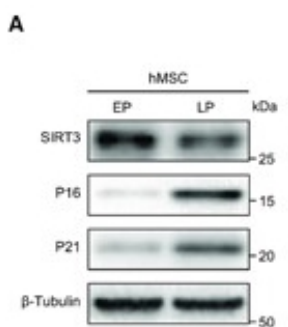
Usage suggestions

This product can be used in immunological reaction related experiments. For more information, please consult technical personnel.

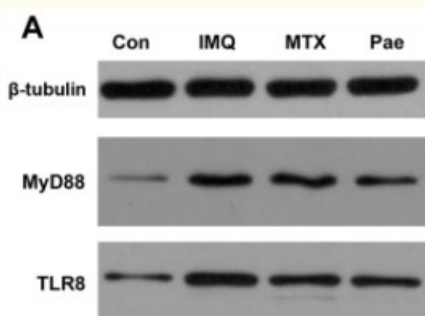
Products Images



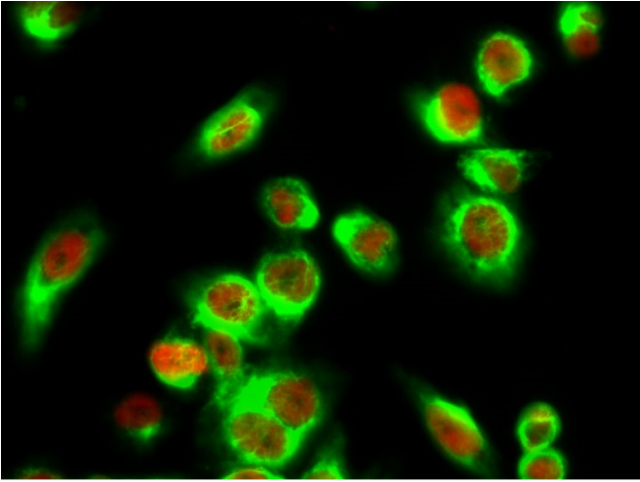
Cheng, X., Wang, J., Liu, C. et al. Zinc transporter SLC39A13/ZIP13 facilitates the metastasis of human ovarian cancer cells via activating Src/FAK signaling pathway. *J Exp Clin Cancer Res* 40, 199 (2021).



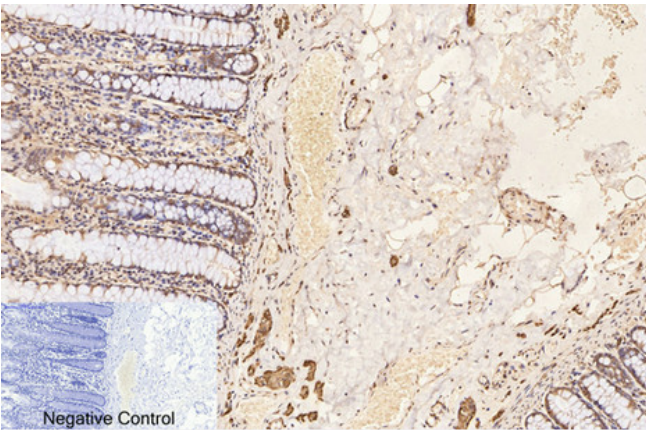
Diao, Zhiqing, et al. "SIRT3 consolidates heterochromatin and counteracts senescence." *Nucleic acids research* 49.8 (2021): 4203-4219.



Meng, Yujiao, et al. "Paeonol ameliorates imiquimod-induced psoriasis-like skin lesions in BALB/c mice by inhibiting the maturation and activation of dendritic cells." *International journal of molecular medicine* 39.5 (2017): 1101-1110.



Immunofluorescence analysis of HeLa cell. 1,CREB-1 (phospho Ser133) Polyclonal Antibody(red) was diluted at 1:200(4° overnight). β -Tubulin Monoclonal Antibody(5G3)(green) was diluted at 1:200(4° overnight). 2, Goat Anti Rabbit Alexa Fluor 594 Catalog:RS3611 was diluted at 1:1000(room temperature, 50min). Goat Anti Mouse Alexa Fluor 488 Catalog:RS3208 was diluted at 1:1000(room temperature, 50min).



Immunohistochemical analysis of paraffin-embedded Human-colon tissue. 1, β -Tubulin Monoclonal Antibody(5G3) was diluted at 1:200(4°C,overnight). 2, Sodium citrate pH 6.0 was used for antibody retrieval(>98°C,20min). 3,Secondary antibody was diluted at 1:200(room temperature, 30min). Negative control was used by secondary antibody only.